

48' Straight Digital

Video Production

3 deck straight trailer (48'x12.6')

3 position production deck

3 position mid deck

3 position rear deck

Grass Valley Kalypso 4 ME Serial Digital Switcher. Has 80 inputs 40 outputs, 3 internal DVE's, and Peripheral Bus Control.

Gveous/ Dveous Dual Twin Serial Digital DVE

Graphics

Chyron Hyper-X HD/SD with C-Mix

Chyron iNFIniT! 060, 601, Transform II, 9 Gig Hard Drive with external, 250 ZIP, 1 keyboard

Video Tape

1 EVS XT[2] 4 Channel Video server

1 EVS X-File[2] Removable Storage

1 EVS HUB[2] Netguard

3 Sony BVW-75

3 Sony DVW-500

DNF ST-300 controllers

1 Fast Forward with removable drives and Lance controller

Cameras/Lenses

4 Ikegami 377 Studio Cameras

2 Ikegami 377P Studio Build-Up Cameras

6 Vector 70 Pan Heads

6 Quickset heavy duty tripods

3 Sachtler Video 18P pan heads and sticks

6 Fujinon 66X lenses, 2X, Macro, semi-servo zoom

3 Fujinon 20x Lenses, 2X

1 Fujinon 5.5 wide angle lens

* other cameras and lenses available

Truck is wired for 12 Cameras

Soundcraft Series 4 44x8x2

2 Digi-Cart II+ (100 mb ZIP) with DNF

Peripheral control to Switcher,

Tascam CD Player,

Sony DAT,

DBX Compressor/Limiters,

2000 point patch,

3 Telos Links,

2 Telos One Hybrids,

4 Couplers

4 Sennheiser HMD-25 Sportscaster

Headsets

4 Daltech Announce Boxes

6 Electrovoice 635's

6 Audio Technica AT835's

4 Audio Technica 831B Lavs

6 Sony ECM 55 Lavs

4 Shure SM 58's

2 Motorola Base Stations

6 Motorola Walkie Talkies

Monitoring

External Monitors

6 9" Color

4 13" Color

Intercom/Communications

RTS 12 Channel Intercom

12 Powered PL channels

8 RTS IFB Channels

7 803 Master Stations

20 BP325 belt packs

10 IFB boxes

3 Biscuit boxes

8 Line Phone System

System Equipment

PESA Video Router 64x64

Video/Serial Digital 64x32 Stereo

Audio

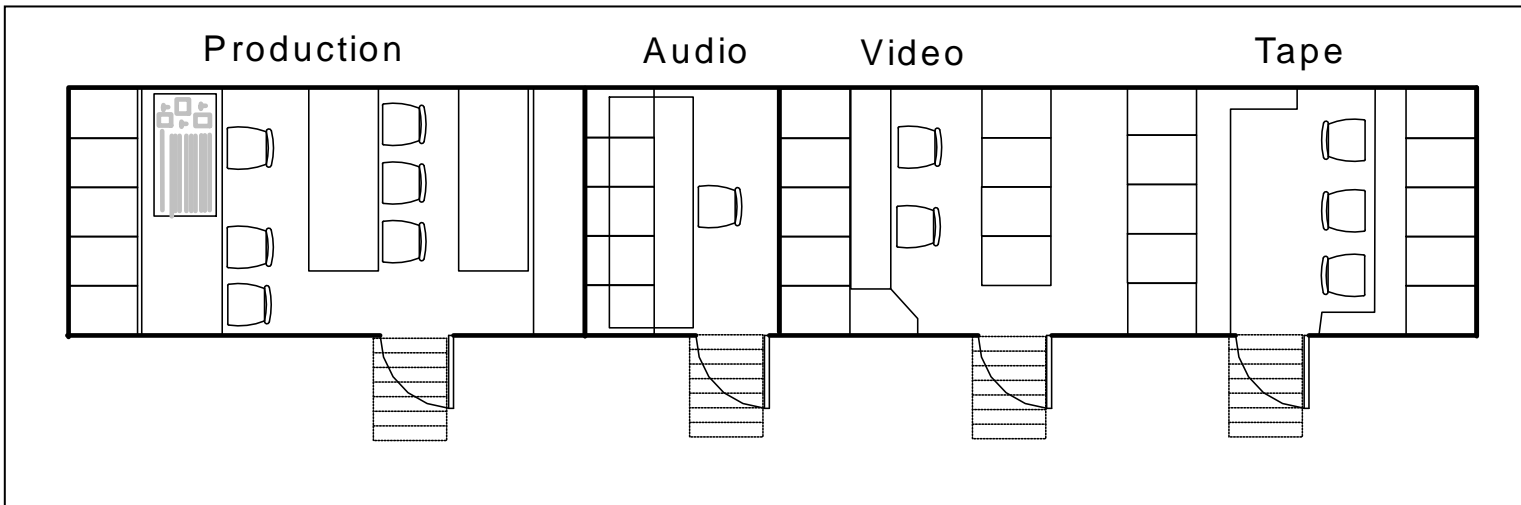
Sigma 64x128 Analog Router

12 DPS 475 Frame Syncs,

4 GVG A/D and D/A's Converters

1 GPS Clock system

1 Link PDP-886 Closed Caption



Dimensions/Power

48' x 13'6" H x 8'6" W

208/240 Volts Single Phase Or

Three Phase, 200 Amps

150' cable (series D camlock)

10 ton HVAC

205-663-4411



